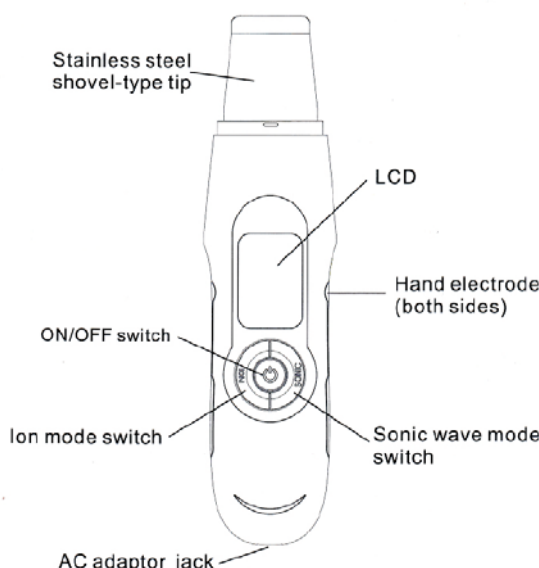


USER GUIDE

Portable skin scrubber, ref. MOVE (P-03A)



Please read this document carefully before using the device. Keep it in an accessible place so that you can read it at any time.

General information

Through high frequency vibration, shovel-type cleansing device can carry out deep massage, which promotes the motion of fat while improving the microcirculation, stimulates the combustion, the split and the conversion of the lipocyte into metabolite so as to achieve cleansing effects.

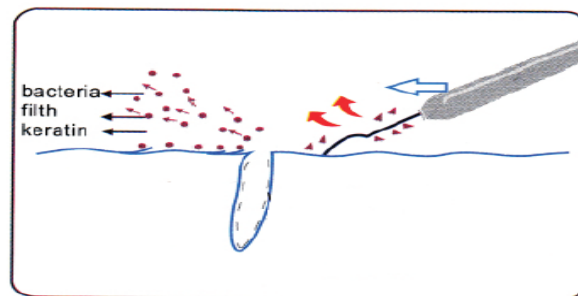
By using a shovel-type probe, it allows going deeply into the skin by 3-7 mm, and in consequence the appropriate beauty lotion enters and emulsifies the filth and redundant sebum, the make-up leftovers of the pores and sweat so that it can be eliminated helped by the rinsing water at the end.

It is an effective cleansing method that can remove filth, fat and acne, which helps the skin have a better absorption and achieve healthy whitening.

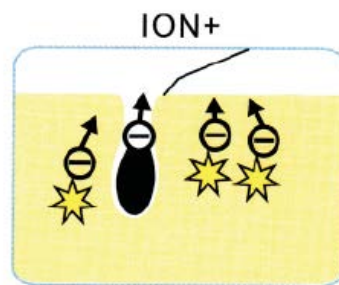
A 45-degree angle operation should be adopted to accelerate the metabolism of epidermic cells and enhance the shedding of the ageing cells, while softening keratin and restoring the skin elasticity in order to give

the skin a firm, smooth and delicate appearance.

Function 1: Cleansing



Vibration of ultrasonic waves atomise the filth and bring it out. The dirt can flow out of the skin through the electricity.

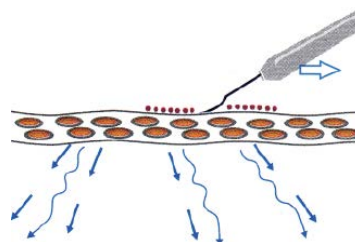


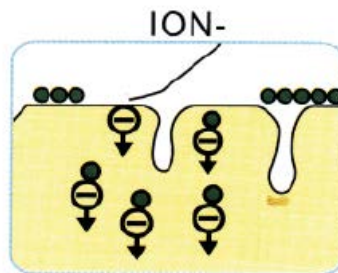
In order to help eliminate aged epidermic cells, use more intensity in the function Clean +.

Function 2: Nutrition

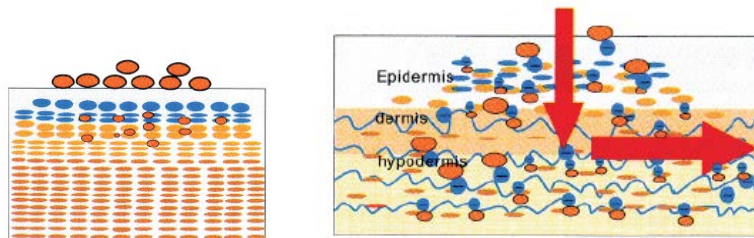


Powerful vibration of ultrasonic waves helps activate skin. The electricity contributes to nourish the skin layers.





In order to activate the skin nutrition, use more intensity in the function Nutri-.



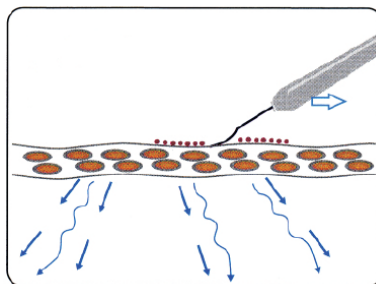
When nutritive particles cannot be absorbed into deep layers, negative ion helps introduce them when flowing to positive pole.

Function 3: Wrinkle removing



EMS

Electrical Muscle Stimulation



In order to exercise skin, use more intensity in the function EMS.

EMS current can improve skin tone, reduce the appearance of fine expression lines and wrinkles, restore skin elasticity and firm face and body contour.

Operation method

Note: the professional should tightly hold the probe when using it.

Facial cleaning care



Nasal bridge cleaning care



Forehand and lower jaw cleaning care



Eye bags and wrinkles cleaning care



Instructions

1. In order to disinfect and protect the skin, clean and pat around the whole face with a suitable astringent lotion and wait until it is absorbed.
2. Apply toner on the skin, then press the ON/OFF switch so as to start the operation.
3. Press the sonic wave switch to select the ultrasonic mode. The pressing sequence is:

Continuous wave level 2 → Level 3 → Discontinuity wave level 1 → level 2 → level 3 → continuous wave level 1.

4. Press the ion switch to select microcurrent mode. The pressing sequence is:

Clean+ level 2→level3 →Nutri- level1→level 2→level3→EMS level 1→level2→level 3→Clean+ level1.

5. This equipment consists of 3 functions: 1. Cleansing, 2. Nutrition, 3. Wrinkle removing. Select the wave and the ion mode according to your needs.
6. Place the shovel-type probe into contact with the skin to start atomising the sebum of the pores. By slowly moving the probe around the surface to be cleaned, you will start removing blackhead, pimples and acne.
7. The function must be chosen according to the skin care products used (cleansing remover gel or toner). The treatment should not exceed the 10 minutes each time.
8. The probe and equipment must be kept cleaned and disinfected with alcohol after using it.
9. Use continuous wave to clean the skin and remove dirt and the discontinuity wave to perform massage or remove wrinkles.
10. The equipment will automatically get turned off after using it for 10 minutes.
11. Charge the equipment for one hour each time.

Technical specifications

INPUT: AC 100-240V 50/60Hz

OUTPUT: DC 5V 1A

POWER: 3W

Remarks

- Do not use the equipment around the eyes and wounds.
- Keep the machine out of the reach of children.
- Do not apply this treatment with pregnant women.
- The device can produce a squeak sound when it is being used close to an audio frequency.
- Please do not extend the power cord or use additional plugs.
- Please pull out the plug when it is not used. Avoid long-time using to avoid surcharging the equipment.
- Please do not damage, manipulate or pull the power cord off by force and avoid the power cord tangled on the equipment because it may cause fire or short circuit. If the power cord is damaged or gets hot, please stop operation immediately.
- Please do not use the equipment with wet hands.
- Please do not use any solvent or similar to clean the equipment as it can damage it.
- Do not use the equipment in a temperature below 0 degrees or above 40 degrees and do not expose it to direct sunlight.